



WORLD SOLO 24H MTB CHAMPIONSHIP
Costa Rica / MS - BRASIL – Eletronic Briefing

Dear athlete, we are approaching the 24H World Championship that will be held in Brazil, and Costa Rica / MS is waiting for this great event. Since I have respected you for being the one that intends to face this prow, that will be marked by a historic history and representativeness of our support.

Important information for your plan and to date your logistics.

DATA: July 25-28, 2019

LOCAL: Ramez Tebet Events Center

Ambrosina Coelho street- Costa Rica / MS - Brazil

Latitude: 18°31'38 "S

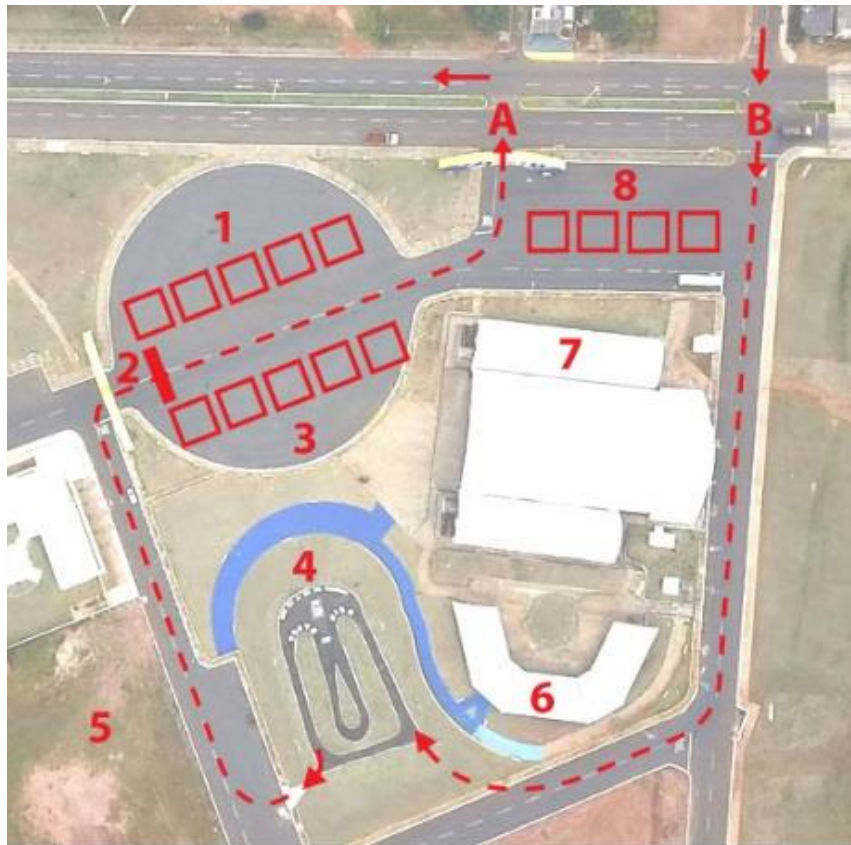
Longitude: 53°57'42 "W

Altimetry: 641 m

CAMPO GRANDE-MS LOCAL TIME: UTC: - 4

Obs: Costa Rica-MS is 1 hour less than Brasilia official time UTC: - 3

VENUE



- A - START
- B - FINISH
- 1 - BOX SOLO
- 2 - START LINE
- 3 - BOX SOLO
- 4 - PUMP TRACK
- 5 - CAR PARKING
- 6 - FOOD COURT
- 7 - WC / SHOWERS
- 8 - BOX TEAMS



How to check in Costa Rica / MS from the airport of Campos Grande (MS)

Campo Grande International Airport (CGR) is located approximately 400 km from Costa Rica-MS with estimated travel in 6 hours.

CLIMATE and PRECAUTIONS

A cidade nesta period of year costuma ter dias muito quente e seco pela manhã, colder during the early morning. Morning dawn, devido ao veto constant, thermal sensation and baixa. By isso venham bem prevented. No bike route we suggest levarem 2 caramancholas. We also have to take:

- Um short-win to pedal during early morning
- Anorak (jaqueta impermeável) for moments of revezamento.
- Roupa extras (t-shirt, cycling bermuda, meia) and chinelo for eventuais trocas
- Cover or sleeping bag and thermal isolators for resting moments

SCHEDULE MTB 24H WORLD CHAMPIONSHIP

24th July - WEDNESDAY

1:00 pm Transfer from Campo Grande / MS Airport to Costa Rica / MS

8:00 pm Arrival forecast of the Campo Grande transfer

25th July - Thursday

07:00 to 10:00 am School games of the City of Costa Rica

26th July - Friday

07:00 to 10:00 am School games of the City of Costa Rica

09:00 am Opening of the race track for recognition

4:00 pm Opening of the Arena and the area reserved for teams (tents)

4:00 pm Opening of the secretariat and registration of the participating athletes

4:00 pm to 8:00 pm - Kit delivery

6:30 pm Technical Congress - mandatory for all athletes

8:00 pm Closing of the office and closing of the delivery of Kit

NOTE: The circuit will be open for reconnaissance between 09:00 and 20:00.

27th July - Saturday

07:00 to 09:30 am School games - Short track

07:30 to 10:30 am Opening of the race track for recognition

8:00 am Opening of the secretary

8:00 a.m. to 11:00 p.m Kit delivery

11:15 am Positioning of bikes on easels

11:30 am Call of the athletes to the starting portico

12:00 - Le Mans style start

28th July - Sunday

08:30 to 09:30 am Trail Run Start (21k, 16k and 6k)

12:00 am Closing of the course. No athlete opens new lap

2:00 pm Time to finish bike back (open before 12 noon)

3:00 pm Awards Ceremony (forecast)

12:00 to 17:00 pm Rental BOX departure time

REGISTRATION, KIT DELIVERY & OFFICIAL MEETINGS

The kit will be delivered at the Ramez Tebet event center (Ambrosina Paes Coelho street, Costa Rica / MS). The athlete will be able to pick up their kit on Friday, 07/26/2019, from 4:00 p.m. to 8:00 p.m. or on Saturday, 07/27/2019, between 8:00 p.m. and 11:00 p.m.

The technical congress will take place on the Friday at 6:30 p.m., and is obligatory for the athletes. In this congress all details regarding the course and rules of the competition will be transmitted to the athletes.

At the time, photos and a press conference should be taken.

For the removal of the athlete's kit, it is necessary to submit the completed and signed TERMS OF RESPONSIBILITY and submit a photo document.

TEAM AREA

The area for the athletes and support teams tents will be available from 4:00 pm on Friday, 07/26/2019.

Attention, the athletes of the categories SOLO have a different area of the athletes of the categories double, quartet and sextet. Check the map on the event website.

Box locations will be sorted on a first-come, first-served basis.

The boxes have dimensions of 3 x 3 meters and can be rented or own.

PARKING

The Ramez Tebet Event Center has a parking area on the side. You will not be allowed to park the car next to the tents at any time of the event even if it is to

unload the car. Nor in the area that is part of the race course. The car must park in the defined place and transport the manually loaded material to its tent.

LICENSES

We do not need any special leave from the athlete. No UCI license is required.

We have increased the acquisition of medical and travel insurance in case of transfer to hospital or care of greater complexity.

CHIP ELECTRONIC & IDENTIFICATION BRACELET

The timing chip will be on the bike board with the athlete's numeral.

Each athlete in the solo category will receive two plates and, for use in case of reserve equipment (second bike).

For the double categories, quartet and sextet, each athlete will also receive a plate with numeral. Every athlete should always use their bike, so that the calculations of the team's laps happen correctly. It is not allowed to cut the plate, bend or make any kind of change in it.

Each athlete will receive a bracelet that should be used as a way of identifying the registered athletes. Only the athletes with the wristband on the wrist can enter.

RETURNING OF ATHLETES IN TEAMS

For those who are participating in teams, athlete exchanges can only be made in the "transition area" where there will be a supervisor controlling the entry and exit of each athlete. For the exchange, the athletes must also pass a "beat and roll" bracelet to the one entering the course.

FOOD HALL

At the Brasil Ride arena, we will have a food court with lots of food options for athletes: pasta, pizzas, sandwiches, coffee and beers will be some of the options.

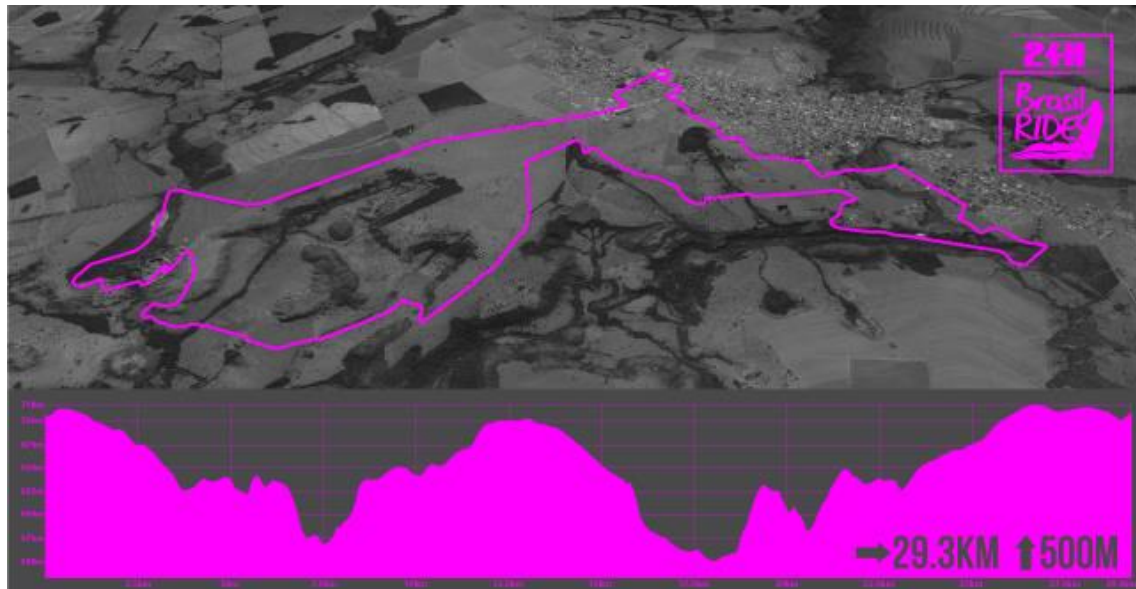
SHIMANO NEUTRAL SUPPORT

Shimano will be offering its support service to all registered athletes. This service will be offered after the start of the race, where repairs, adjustments, adjustments, tire changes can be made by Shimano. Shimano will not be selling parts if a part is needed, but can be replaced if the athlete supplies the replacement part. Shop with parts will be available on the spot. This Shimano service is free to registered athletes.

WATER, SHOWERS, BIKE WASH AND BATHROOMS

We will have available to the athletes during the 24h cold water for consumption, toilets and changing room with hot shower. We will also have a bike-wash area for cleaning the bikes during the 24 hours.

RACE TRACK



SUPPORT TENTS - BOX

Each solo athlete is entitled to a space of 3 x 3 meters to mount a tent if he wishes. There is no limit to the number of people to provide support to athletes, either solo or in teams. There is also no need to register support people. IT IS THE RESPONSIBILITY OF EACH ATHLETE TO PROVIDE AND ASSEMBLE THEIR TENTS. The organization also has some boxes for leasing of size of 3m x 3m. A power point of 220Volts will be available in the tents assembly area.

We suggest that for your tent you can:

- An extension cord of at least 10 meters with "benjamin" or "T" (adapter to connect more than one socket)
- Sandbags to stabilize the tent (because of high winds).

Athletes are allowed to "split" the same tent

- Think about your comfort during the 24 hours. We advise to bring folding chairs, sleeping bag, insulation, hygiene kit, slipper, towels, lantern, food, extension with lamp,

NO cars will be allowed to park or circulate in the tents area.

For safety reasons, grills or fire will not be allowed inside the tents.

- Electric ovens, hair dryers will also not be allowed. They overwhelm the network by compromising the distribution of energy to others and compromising the safety of athletes.

- The voltage supplied to the tents will be 220Volts. If you have a device that does not work at this voltage, bring your transformer.

There are spaces for tents. Ask the arena manager for guidance on where to set up the arena. Within the area reserved for tent assembly, the assembly order is free, where those who assemble first have the priority of choice.

RACE RULES

Observe the rules of the event to pay attention to the details of the event, the mandatory equipment and details of its category.

TRAIL RUN

On July 28, at 08:30 will be made to the Trail Run start. Much of the Trail Run course will take place in stretches of the bike, but in the opposite direction, so that athletes walking and bikes will cross. The priority will be the bikes, but watch out for the flow of people crossing the route and cheering for the final moments of the mountain bike.